




# Quality of Life

*for independent living*







### Challenge

Pursuing continuous  
change and  
innovation

### First Class

Striving for the  
highest quality  
and  
reliability

### Creativity

Promoting  
creativity  
in technology  
development

# About Qmobility

Qmobility Pty Ltd is an Australia based, innovative mobility & rehabilitation equipment provider. With a manufacturing foundation of almost 20 years, Qmobility thrives on research & development technologies, enabling unprecedented strengths as both a manufacturer and distributor. As a growing player in the mobility equipment industry in Asia-Pacific, we build on our intelligent, in-house engineering to continuously offer quality innovation for our end users.

Our goal is to continually provide innovative and superior functional designs of mobility and rehabilitation equipment, designed to aid the elderly, the less mobile and rehabilitating users in public, private and home care environments.

An example is our Q Transfer Lift, which is a smarter and safer alternative to traditional lifts/hoists systems for improved patient transfer – zero lifting required from user/carer.

Our Qmobility range extends to assistive technology products and also patented bathroom fittings and safety railings with special features designed to ensure highest levels of user safety and comfort. We excel to advance in mobility and assistive technology products, ensuring a safer and more satisfying lifestyle for all users.

1997	01	Yu Gwang Precision Establishment 302, Nowon 3 ga, Buk-gu, Daegu
2002	08	Blender Presses Method Development (Utility)
2006	03	Health Mechanism / Double Insulated Heater Development (Utility model)
	06	Trowel Development (Utility model)
	07	Expansion - 246, Nowon 3 ga, Buk-gu, Daegu
	08	5000V Withstand Voltage Heater (Patent)
2007	03	Support Bar Development (Patent 1, Utility model 2, Design 12)
	12	Venture Company
2008	02	KATR Industrial Environmental Research Centre Test Inspection passed (Q Grab Bar)
	03	Collective Standards Certification (Q Grab Bar)
	10	Friendly Elderly - Quality Products Specifications (Q Grab Bar)
2009	07	Rehabilitation Unit for Legs (Patent- Walking Trainer)
	08	Rehabilitation Trainer for legs (PCT Register - Walking trainer)
2010	02	ISO9001 Certification
	05	Medical Device Manufacturing License (Walking trainer)
	08	Medical Device Manufacturers Items Report (Walking trainer)
	08	Ministry of Knowledge Economy's Award (Walking trainer, New Technology Use)
	10	Q cane, Q Grab Bar Development (Design)
2011	02	Q Elderly Transfer Lift Developed
	02	Q Threshold Ramps Developed
2012	09	Q Transfer Lift (Patent)
2012	11	Electronics Golf Hole Cup Developed
2013	03	Sodium meter Developed
2014	05	USA FDA Registered
	05	Q Transfer Lift Medical Device Registered
2014	07	TGA Registered, Australia

“Quality innovation  
and user safety are  
our primary concern ”



유광정밀  
YU GWANG PRECISION

YU

스틸케어

HTI

KwangWan

SPiC

고령친화산업지원

안전손잡이







## Exhibitions

### Past:

Gyeonggi	KINTEX (kintex) 2008, 2009, 2010, 2011, 2012
Daegu	EXCO - (EXCO) 2008, 2009, 2010, 2011
Busan	BEXCO (Bexco) 2008, 2009, 2010, 2011, 2012
Seoul	Kimes International Medical & Hospital Equipment Exhibition 2010
Guangzhou, China	Kim Dae-Jung Convention Center, 2008, 2009, 2010, 2011, 2012

### Upcoming:

Sydney, Australia	Assistive Technology Suppliers Australasia (ATSA), Living Expo 2015
-------------------	---

## Mass Media

Able News  
 Aving News  
 Busan MBC News  
 MTN "Life U"  
 KBS News  
 Leaders Rehab Centre  
 Renovating Magazine (Australia),  
 Issue 96, Jan-Feb-Mar Quarter 2015

# Certificates





# QLift Chair

## Product Description & Usage

### Sit-to-Stand:

For people who are able to walk once assisted to a standing position i.e. sit-to-stand transfers.

### Sitting:

For people who have difficulty moving on/off a wheelchair: the height adjustments allow for easy transfer between seated positions (chairs, bed, couch with differing heights).

### Everyday assistance:

Simple height adjustments ensure safe, seated transfers (matching height proximity to most indoor furniture e.g. bathroom seat transfers).

### Workplace:

Adjustable height for optimal posture suited to a variety of work needs.

### Extra safety:

Sensor device attached to the rear wheels prevent the QLift Chair from descending too quickly/too close to the floor, avoiding injury/accidents.



## Product Specification

Power	AC 110/240V 50/60 Hz
Weight	50kg
Safe operating load	120kg



When boarding at maximum height (55cm)



When boarding at minimum height (7cm)

# QTransfer Lift

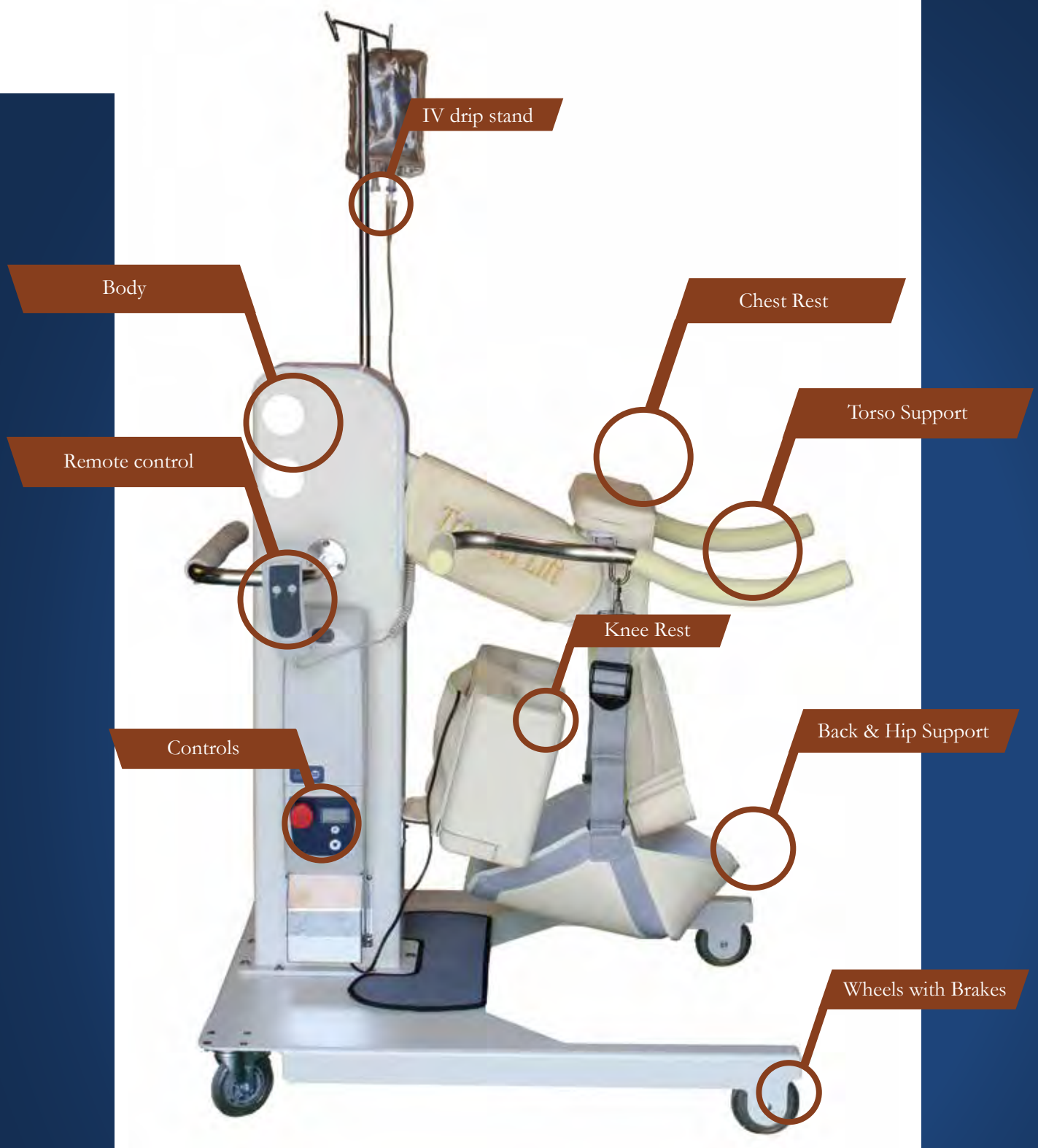
TGA ARTG No. 225769  
FDA Listing No. D217680

The QTransfer Lift is based on an innovative “zero-lifting” design, uniquely offering a safer and more comfortable alternative to all currently available patient lifters and hoists.

As a one-piece utility (not requiring separate sling supports) the QTransfer Lift offers practicality as an all-in-one device, allowing carers to perform numerous transfer functions: seamless seated transfers from wheelchair to bed, bathroom, couch etc. and vice versa. Zero lifting is required from carers hence significantly reducing back strain, enabling a faster, safer and less stressful transferring experience for both user and carer.







### Product Specification

Power	AC 110/240V 50/60 Hz
Size	750(W) X 900(L) X 1130(H) mm
Weight	72kg
Safe operating load	180kg
Materials	Steel, Polyester



EVA pipes

EVA pipes

Clamp

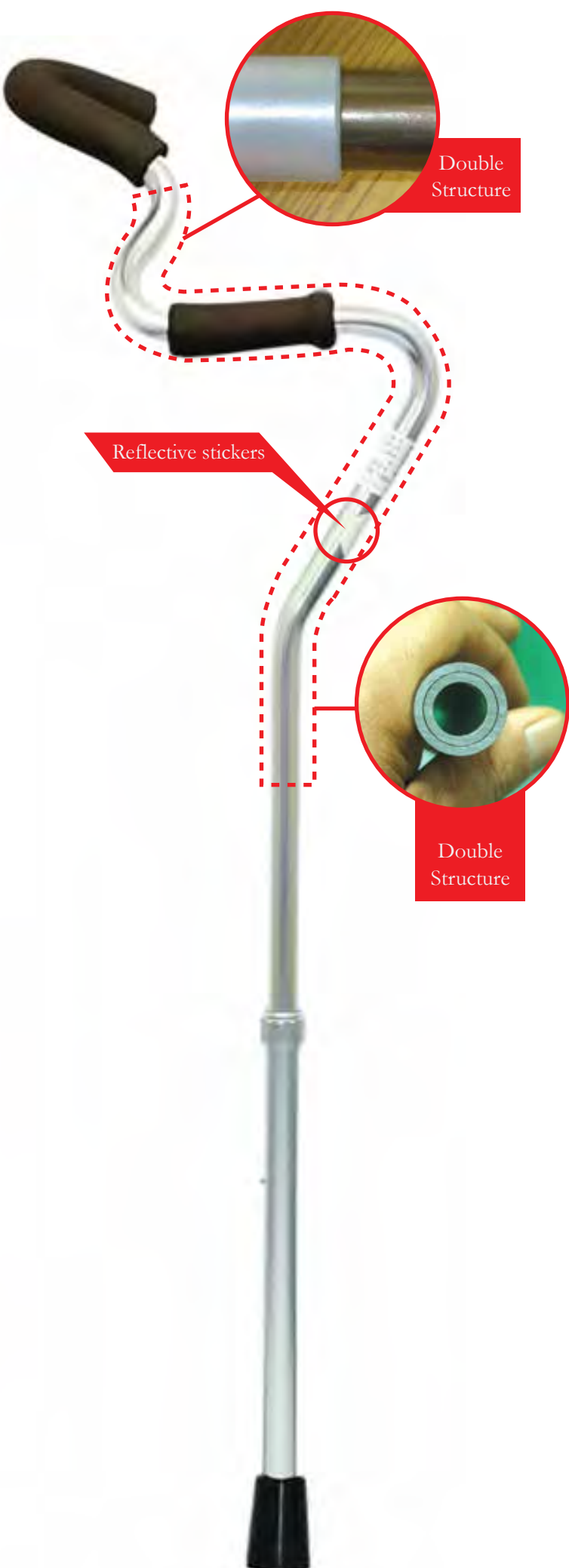
Length adjustment holes

Rubber tips

### Product Specification

Size	Min. 35" Max 43"
Safe Load	90 kg
Materials	Aluminium





The QCane is an innovative walking aid, with an integrated hand-grip and forearm brace/support, offering exceptional stability to seniors and users requiring greater support from a walking stick. The uniquely curved and height adjustable design of the QCane allows users—in particular users suffering from arthritic wrists—the option to shift their body weight away from their wrists and spread it evenly to their forearm for greater stability and control. The QCane can be used by either hand, or as a pair similar to elbow crutches but without the “clinical” look.









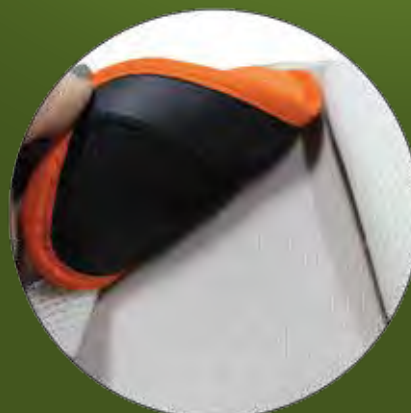
# QBody Support



The QBody Support is a safety belt / harness, attachable to most seats and wheelchairs, suitable for various users: the elderly suffering from dementia, rehabilitating patients and users with limited mobility requiring extra support and balance. The QBody Support can be positioned to provide comfort, optimal back support, ensuring balance and stability to suit each user's needs.



The QBody Support can be easily installed to seats and wheelchairs, with durable loops for securing over wheelchair handles.



The heavy-duty clasp ensures secure positioning and is easy to clasp on and off the back of the chair. The front straps are of adjustable length, ensuring a secure and comfortable fit for the user.

## Product Specification

Size (mm)	470 x 370 x 170
Colour	White
Materials	Polyester

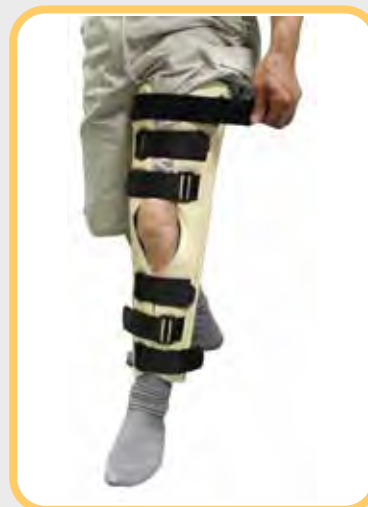
# Q Knee Immobiliser with Detachable Patella Strap

Prior to use, it is important to ascertain the correct size suitable for user's knee length. For accurate and safe application, the QKnee Immobiliser should fit on the leg 2"-3" (5.08cm-7.62cm) above the lateral malleolus, and 6"-8" (15.24cm-20.32cm) below the femoral head.

Product Specification		
Size	Length (L)	Width (W)
Small	600mm	43mm
Medium	600mm	50mm
Large	600mm	55mm
X-Large	600mm	66mm



1. Unwrap and position the QKnee Immobiliser on the leg, so that the contoured interiors are running down vertically.



2. Secure alternating loop and lock straps.



3. Tighten straps to ensure secure and comfortable fit.

Patellar Strap



4. Attach optional patella strap to help prevent swelling and hold dressing in place.

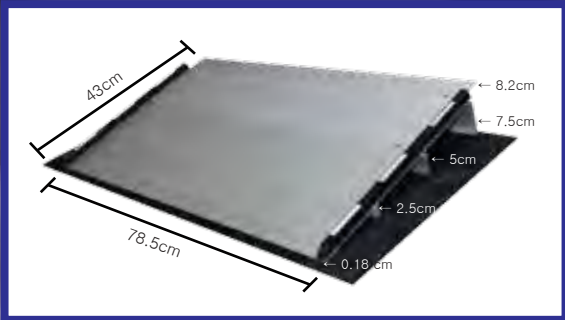


# Q Toilet Seat Grab Bar

The QToilet Seat Grab Bar is a unique modification to conventional grab bars, allowing easy adjustment to most toilet bowl measurements and provides quality support and safety for users. The product is also powder-coated to ensure a safe, anti-slip hold for every user.



Product Specification	
Material	Stainless steel pipes, Silicone tubing, Silicone gab Aluminium plate, reflective stickers
Configuration	Body plate, Silicone pad
Colour	Silver and white
Size (L x W x H)	Min(mm). 310 x 470 x 410    Max(mm). 310 x 500 x 410
Safe operating load	90 kg



The portable ramp easily fits to sliding doors, thresholds, raised landings, etc.

The lightweight, durable QRamps can be easily installed to enable smooth and safe entry / exits from buildings.

Section	Size(W×L×H)	Step	Weight	Capacity
1step	75 × 12 × 2.5(cm)	1.5-2.5	1kg	300kg
2step	75 × 13 × 4.9(cm)	2.5-4.9	2kg	300kg
3step	75 × 14 × 7.5(cm)	4.9-7.5	3.2kg	300kg
Common use	75×5.6		0.3kg	300kg







Portable carry bag



#### Product Description & Usage

The QRamps are designed for scooters, manual and motorised wheelchair users to gain access where elevated areas may impede mobility. The lightweight, durable threshold ramps can be easily installed to enable smooth and safe entry/exit from buildings.

The Ramp is portable, and can be used with sliding doors, thresholds and other raised landings.

#### Key Features

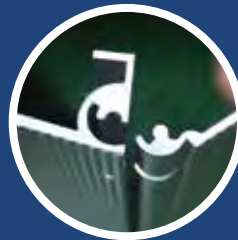
The body

Portable Bag

Non-Slip Rubber Pad

#### Safety Precautions

Prior to use, please measure the height of the elevated landing to ensure the correctly sized ramp is used. QRamps come in single step, double or more, depending on the condition. Materials are made of anodised aluminium which is rust and corrosion proof with a non-skid surface.



#### Product Specification

Weight	6.2kg
Safe operating load	300kg
Materials	Aluminium. ABS copolymer



#### Installation method

1. Remove nut from the wheel bolt.
2. Remove the wheels from the wheelchair body.
3. Insert EZGO (wheelchair Lever) on to the bolt, between the wheelchair body and the wheel.
4. Fasten the nut back on to the bolt.

#### Operating method

1. Grab the EZGO handles softly.
2. Press down and push the handle forward to propel the wheel.
3. Repeat the above action continuously to keep moving forward.
4. Press down on the EZGO handle to brake.
5. Turn left or right by using the corresponding handle to move forward with the other handle in the brake position.
6. Press down and pull back the handle to move backward.
7. Practise the same actions repeatedly to familiarise oneself with the motion.





# Q Grab bar

The QGrab Bars provides an ideal choice for retrofitting in both interiors and exteriors of residences: in bedrooms, against the wall near chairs, in the bathroom and kitchen; near front and back doors and property-entrances; as well as on porches, balconies etc.

The range comes in a variety of colour choices, lengths and textures, are very flexible in application and will blend well with different décor schemes (timber, tile, industrial, commercial, residential etc.). The entire QGrab Bar range is also powder coated with a matte finish for an anti-slip touch.

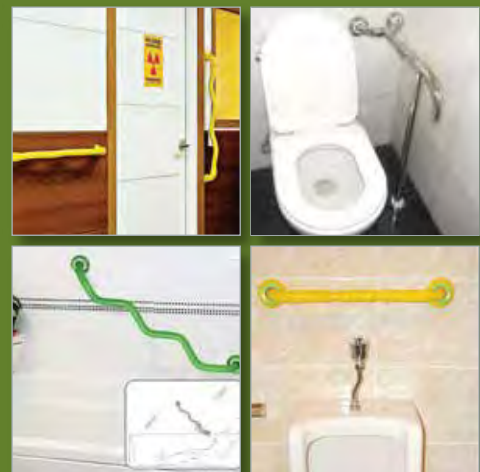
A defining feature of the QGrab Bars is its unique W-shaped, curved design allowing extra support for pulling oneself up in sit-to-stand positions. This makes both assisted and non-assisted transfers much easier as the angled parts allows for greater grip of the hand and leverage; as opposed to a conventional straight grab bar, where there is always a risk of slippage and therefore loss of balance.

The angled W shape of the QGrab Bar allows for easier shifting of the weight so one can have greater control of their balance as they pull themselves up from the toilet, chair, bed, lounge, wheelchairs etc; and is therefore a much safer and comfortable support that imparts confidence to the user.

Semi-Hammonton Powder Coating

Non-slip feature

Non-slip feature



## Glow-in-the-dark stickers on every QGrab Bar

Each QGrab Bar also has glow-in-the-dark features, minimising accidents in the case of night-time use, power outages, emergencies, evacuations etc.



Grab bar

**YGB001**

880mm

**Bathroom type YGB001**

Code No	: F18030045116
Material	: Stainless, ABS copolymer
Size	: $\varnothing$ 32 (Bar diameter)
Weight	: 1,030 g
Colour	: silver
Configuration	: Grab bar, Piece (8mm Anchor bolts : 6 pieces+4mm bolts : 8 pieces)
Safe operating load	: 100 kg

When attaching to a concrete wall, drill holes that are 45mm deep (drill size: 8mm)

Grab bar

**YGB002**

900mm

**Bathroom type YGB002**

Code No	: F18030045117
Material	: Stainless, ABS copolymer
Size	: $\varnothing$ 32 (Bar diameter)
Weight	: 890 g
Colour	: silver
Configuration	: Grab bar, Piece (6mm Anchor bolts : 6 pieces+4mm bolts : 6 pieces)
Safe operating load	: 100 kg

When attaching to a concrete wall, drill holes that are 45mm deep (drill size: 6mm)

Grab bar

**YGW002**

640mm

**Toilet type YGW002**

Code No	: F18030045107
Material	: Stainless, ABS copolymer
Size	: $\varnothing$ 32 (Bar diameter)
Weight	: 640 g
Colour	: silver
Configuration	: Grab bar, Piece (6mm Anchor bolts : 6 pieces+4mm bolts : 8 pieces)

Safe operating load : 100 kg

When attaching to a concrete wall, drill holes that are 45mm deep (drill size: 6mm)

Grab bar

**YGC001**

500mm

**Factory & Toilet type YGC001**

Code No	: F18030045118
Material	: Stainless, ABS copolymer
Size	: $\varnothing$ 32 (Bar diameter)
Weight	: 480 g
Colour	: silver
Configuration	: Grab bar, Piece (8mm Anchor bolts : 6 pieces+4mm bolts : 8 pieces)

Safe operating load : 100 kg

When attaching to a concrete wall, drill holes that are 45mm deep (drill size: 8mm)



## Grab bar

**YGW001**



### Toilet type YGW001

Code No	: F18030045106
Material	: Stainless, ABS copolymer
Size	: $\phi$ 32 (Bar diameter)
Weight	: 780 g
Colour	: silver
Configuration	: Grab bar, Piece (8mm Anchor bolts : 6 pieces+4mm bolts : 8 pieces)
Safe operating load	:100 kg
When attaching to a concrete wall, drill holes that are 45mm deep.(drill size: 8mm)	

## Grab bar

**YGC01**



### Factory & Toilet type YGC01

Code No	: F18030045119
Material	: Stainless, ABS copolymer
Size	: $\phi$ 32 (Bar diameter)
Weight	: 530 g
Colour	: silver
Configuration	: Grab bar, Piece (8mm Anchor bolts : 6 pieces+4mm bolts : 8 pieces)
Safe operating load	:100 kg
When attaching to a concrete wall, drill holes that are 45mm deep.(drill size: 8mm)	

**Q Grab bar**



Grab bar

YGH02



830mm

Hospital & Senior housing facilities type **YGH02**

Code No	: F18030045105
Material	: Stainless, ABS copolymer
Size	: $\varnothing$ 32 (Bar diameter)
Weight	: 760 g
Color	: silver
Configuration	: Grab bar, Piece (6mm Anchor bolts : 6 pieces+4mm bolts : 6 pieces)

Safe operating load : 100 kg

When attaching to a concrete wall, drill holes that are 45mm deep.(drill size: 6mm)

Grab bar

YGH001



830mm

Hospital & Senior housing facilities type **YGH001**

Code No	: F18030045104
Material	: Stainless, ABS copolymer
Size	: $\varnothing$ 32 (Bar diameter)
Weight	: 770 g
Color	: silver
Configuration	: Grab bar, Piece (6mm Anchor bolts : 6 pieces+4mm bolts : 6 pieces)

Safe operating load : 100 kg

When attaching to a concrete wall, drill holes that are 45mm deep.(drill size: 6mm)

Grab bar

YGH002



830mm

Hospital & Senior housing facilities type **YGH002**

Code No	: F18030045113
Material	: Stainless, ABS copolymer
Size	: $\varnothing$ 32 (Bar diameter)
Weight	: 760 g
Color	: silver
Configuration	: Grab bar, Piece (6mm Anchor bolts : 6 pieces+4mm bolts : 6 pieces)

Safe operating load : 100 kg

When attaching to a concrete wall, drill holes that are 45mm deep.(drill size: 6mm)



## Grab bar

### YGA02



460mm

#### Door handle type YGA02

Code No	: F18030045114
Material	: Stainless, ABS copolymer
Size	: $\phi$ 32 (Bar diameter)
Weight	: 450 g
Colour	: silver
Configuration	: Grab bar, piece (NICA bolt 6mm : 6 pieces+4mm bolts : 8 pieces)

Safe operating load :100 kg

When attaching to a concrete wall, drill holes that are 45mm deep.(drill size: 6mm)



## Grab bar

### YGA03



660mm

#### Door handle type YGA03

Code No	: F18030045115
Material	: Stainless, ABS copolymer
Size	: $\phi$ 32 (Bar diameter)
Weight	: 600 g
Colour	: silver
Configuration	: Grab bar, piece (NICA bolt 6mm : 6 pieces+4mm bolts : 8 pieces)

Safe operating load :100 kg

When attaching to a concrete wall, drill holes that are 45mm deep.(drill size: 6mm)



Grab bar

**YGA001**

360mm

**Door knob type YGA001**

Code No	: F18030045110
Material	: Stainless, ABS copolymer
Size	: $\phi$ 32 (Bar diameter)
Weight	: 350 g
Color	: silver
Configuration	: Grab bar, piece (NICA bolt 6mm : 6 pieces+4mm bolts : 6 pieces)

Safe operating load :100 kg

When attaching to a concrete wall, drill holes that are 45mm deep.(drill size: 6mm)

Grab bar

**YGA002**

460mm

**Door knob type YGA002**

Code No	: F18030045111
Material	: Stainless, ABS copolymer
Size	: $\phi$ 32 (Bar diameter)
Weight	: 430 g
Color	: silver
Configuration	: Grab bar, piece (NICA bolt 6mm : 6 pieces+4mm bolts : 6 pieces)

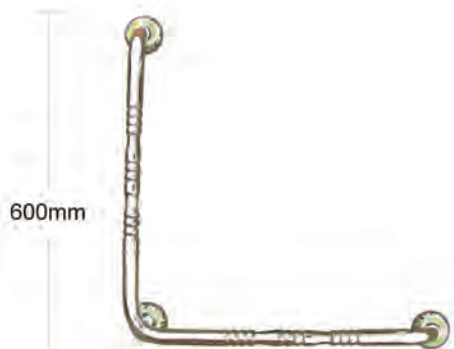
Safe operating load :100 kg

When attaching to a concrete wall, drill holes that are 45mm deep.(drill size: 6mm)

Grab bar

**YGW-L**

Registration of design No.30-2008-0029280



600mm

600mm

**Shower & Toilet type YGW-L**

Code No	: F18030045108
Material	: Stainless, ABS copolymer
Size	: $\phi$ 32 (Bar diameter)
Weight	: 1,500 g
Color	: silver
Configuration	: Grab bar, Piece (8mm Anchor bolts : 9 pieces+5mm bolts : 9 pieces)

Safe operating load :100 kg

When attaching to a concrete wall, drill holes that are 45mm deep.(drill size: 8mm)

Grab bar

**YGW-T**

Registration of design No.30-2008-0029276



550mm

700mm

**Shower & Toilet type YGW-T**

Code No	: F18030045109
Material	: Stainless, ABS copolymer
Size	: $\phi$ 32 (Bar diameter)
Weight	: 1,400 g
Color	: silver
Configuration	: Grab bar, Piece (6mm Anchor bolts : 6 pieces)

Safe operating load :80 kg

When attaching to a concrete wall, drill holes that are 45mm deep.(drill size: 8mm)



Grab bar

**YGA003**



#### Apartment balcony type **YGA003**

Code No	: F18030045112
Material	: Stainless, ABS copolymer
Size	: $\phi$ 32 (Bar diameter)
Weight	: 600 g
Color	: silver
Configuration	: Grab bar, piece (NICA bolt 6mm : 6 pieces+4mm bolts : 6 pieces)

Safe operating load :100 kg

When attaching to a concrete wall, drill holes that are 45mm deep.(drill size: 6mm)

Grab bar

**WA-T100**



#### Washbasin & Toilet type **WA-T100**

Code No	: F18030045020
Material	: SUS, ABS copolymer
Size	: $\phi$ 32 (Bar diameter)
Length	: Horizontal 610 mm x Vertical 700 mm
Weight	: 1,650 g
Color	: silver
Configuration	: Grab bar, Piece (8mm Anchor bolts : 9 pieces)

Safe operating load :80 kg

When attaching to a concrete wall, drill holes that are 45mm deep.(drill size: 8mm)

**Q** Grab bar



Grab bar

**BA001**

880mm

**Bathroom type BA001**

Code No	: F18030045001
Material	: Steel, ABS copolymer
Size	: $\varnothing$ 32 (Bar diameter)
Weight	: 1,230 g
Color	: green, yellow, white
Configuration	: Grab bar, Piece (8mm Anchor bolts : 6 pieces+4mm bolts : 8 pieces)
Safe operating load	: 100 kg
When attaching to a concrete wall, drill holes that are 45mm deep.(drill size: 8mm)	

Grab bar

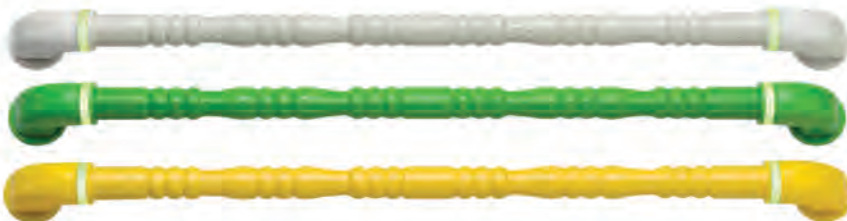
**WA001**

615mm

**Toilet type WA001**

Code No	: F18030045003
Material	: Steel, ABS copolymer
Size	: $\varnothing$ 32 (Bar diameter)
Weight	: 880 g
Color	: green, yellow, white
Configuration	: Grab bar, Piece (8mm Anchor bolts : 6 pieces+4mm bolts : 8 pieces)
Safe operating load	: 100 kg
When attaching to a concrete wall, drill holes that are 45mm deep.(drill size: 8mm)	

Grab bar

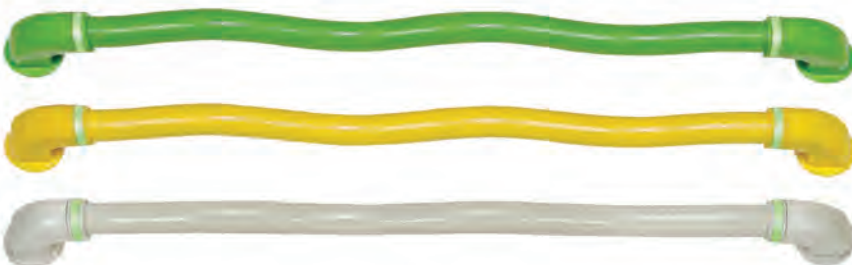
**HB2**

830mm

**Hospital & Senior housing facilities type HB2**

Code No	: F18030045014
Material	: Steel, ABS copolymer
Size	: $\varnothing$ 32 (Bar diameter)
Weight	: 930 g
Color	: green, yellow, white
Configuration	: Grab bar, Piece (6mm Anchor bolts : 6 pieces+4mm bolts : 6 pieces)
Safe operating load	: 100 kg
When attaching to a concrete wall, drill holes that are 45mm deep.(drill size: 6mm)	

Grab bar

**HB001**

830mm

**Hospital & Senior housing facilities type HB001**

Code No	: F18030045005
Material	: Steel, ABS copolymer
Size	: $\varnothing$ 32 (Bar diameter)
Weight	: 900 g
Color	: green, yellow, white
Configuration	: Grab bar, Piece (6mm Anchor bolts : 6 pieces+4mm bolts : 6 pieces)
Safe operating load	: 100 kg
When attaching to a concrete wall, drill holes that are 45mm deep.(drill size: 6mm)	



Grab bar

**BB002**



900mm

### Bathroom type BB002

Code No	: F18030045002
Material	: Steel, ABS copolymer
Size	: $\varnothing$ 32 (Bar diameter)
Weight	: 1,030 g
Color	: green, yellow, white
Configuration	: Grab bar, Piece (6mm Anchor bolts : 6 pieces+4mm bolts : 6 pieces)

Safe operating load :100 kg

When attaching to a concrete wall, drill holes that are 45mm deep.(drill size: 6mm)

Grab bar

**WB002**



640mm

### Toilet type WB002

Code No	: F18030045004
Material	: Steel, ABS copolymer
Size	: $\varnothing$ 32 (Bar diameter)
Weight	: 740 g
Color	: green, yellow, white
Configuration	: Grab bar, Piece (6mm Anchor bolts : 6 pieces+4mm bolts : 6 pieces)

Safe operating load :100 kg

When attaching to a concrete wall, drill holes that are 45mm deep.(drill size: 6mm)

**Q** Grab bar



Grab bar

**HB002**



830mm

Hospital & Senior housing facilities type **HB002**

Code No	: F18030045006
Material	: Steel, ABS copolymer
Size	: $\varnothing$ 32 (Bar diameter)
Weight	: 930 g
Color	: green, yellow, white
Configuration	: Grab bar, Piece (6mm Anchor bolts : 6 pieces+4mm bolts : 6 pieces)
Safe operating load	:100 kg
When attaching to a concrete wall, drill holes that are 45mm deep.(drill size: 6mm)	

Grab bar

**AB001**



360mm

Door knob type **AB001**

Code No	: F18030045008
Material	: Steel, ABS copolymer
Size	: $\varnothing$ 32 (Bar diameter)
Weight	: 390 g
Color	: green, yellow, white
Configuration	: Grab bar, Piece (6mm Anchor bolts : 6 pieces+4mm bolts : 6 pieces)
Safe operating load	:100 kg
When attaching to a concrete wall, drill holes that are 45mm deep.(drill size: 6mm)	

Grab bar

**AB002**



460mm

Door knob type **AB002**

Code No	: F18030045009
Material	: Steel, ABS copolymer
Size	: $\varnothing$ 32 (Bar diameter)
Weight	: 510 g
Color	: green, yellow, white
Configuration	: Grab bar, Piece (6mm Anchor bolts : 6 pieces+4mm bolts : 6 pieces)
Safe operating load	:100 kg
When attaching to a concrete wall, drill holes that are 45mm deep.(drill size: 6mm)	

Grab bar

**AB003**



660mm

Apartment balcony type **AB003**

Code No	: F18030045010
Material	: Steel, ABS copolymer
Size	: $\varnothing$ 32 (Bar diameter)
Weight	: 730 g
Color	: green, yellow, white
Configuration	: Grab bar, Piece (6mm Anchor bolts : 6 pieces+4mm bolts : 6 pieces)
Safe operating load	:100 kg
When attaching to a concrete wall, drill holes that are 45mm deep.(drill size: 6mm)	



Grab bar

CA001



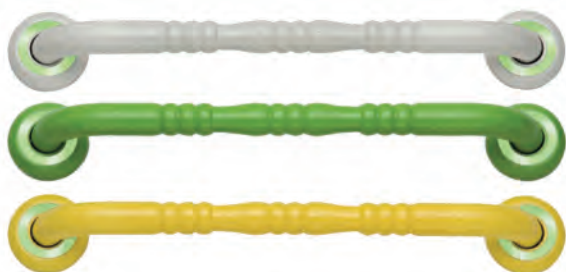
500mm

Factory & Toilet type CA001

Code No	: F18030045007
Material	: Steel, ABS copolymer
Size	: $\phi$ 32 (Bar diameter)
Weight	: 710 g
Color	: green, yellow, white
Configuration	: Grab bar, Piece (8mm Anchor bolts : 6 pieces+4mm bolts : 8 pieces)
Safe operating load	: 100 kg
When attaching to a concrete wall, drill holes that are 45mm deep.(drill size: 8mm)	

Grab bar

CA1

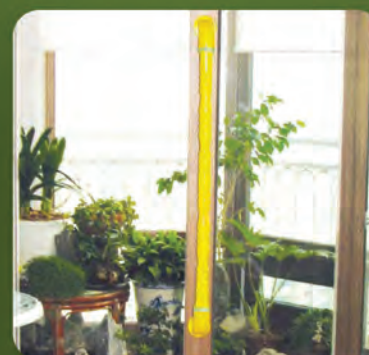


550mm

Factory & Toilet type CA1

Code No	: F18030045013
Material	: Steel, ABS copolymer
Size	: $\phi$ 32 (Bar diameter)
Weight	: 740 g
Color	: green, yellow, white
Configuration	: Grab bar, Piece (8mm Anchor bolts : 6 pieces+4mm bolts : 8 pieces)
Safe operating load	: 100 kg
When attaching to a concrete wall, drill holes that are 45mm deep.(drill size: 8mm)	

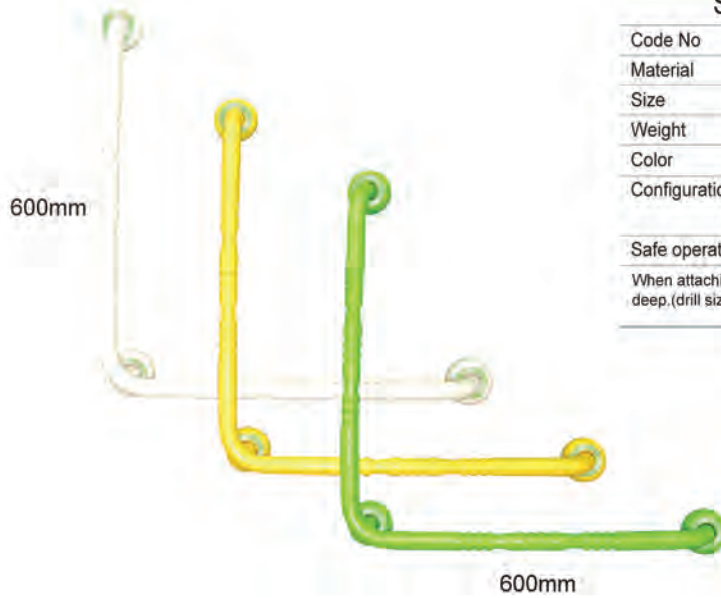
Q Grab bar



Grab bar

**WA-L**

Registration of design NO.30-2008-0029280



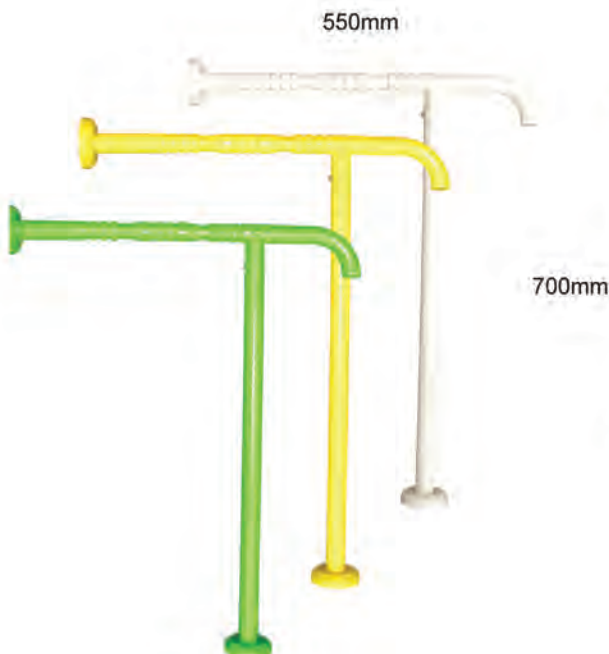
Shower & Toilet type **WA-L**

Code No	: F18030045015
Material	: Steel, ABS copolymer
Size	: $\phi$ 32 (Bar diameter)
Weight	: 1,750 g
Color	: green, yellow, white
Configuration	: Grab bar, Piece (8mm Anchor bolts : 9 pieces+5mm bolts : 9 pieces)
Safe operating load	:100 kg
When attaching to a concrete wall, drill holes that are 45mm deep.(drill size: 8mm)	

Grab bar

**WA-T**

Registration of design No.30-2008-0029276



Shower & Toilet type **WA-T**

Code No	: F18030045016
Material	: Steel, ABS copolymer
Size	: $\phi$ 32 (Bar diameter)
Weight	: 1,750 g
Color	: green, yellow, white
Configuration	: Grab bar, Piece (6mm Anchor bolts : 6 pieces)
Safe operating load	:80 kg
When attaching to a concrete wall, drill holes that are 45mm deep.(drill size: 8mm)	



## Grab bar

### AB2



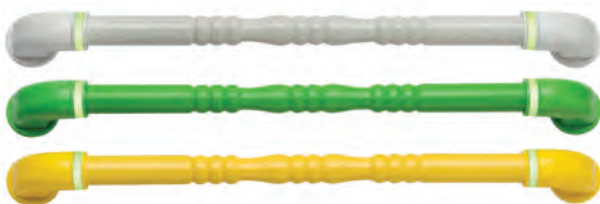
460mm

#### Door handle type AB2

Code No	: F18030045011
Material	: Steel, ABS copolymer
Size	: $\phi$ 32 (Bar diameter)
Weight	: 510 g
Color	: green, yellow, white
Configuration	: Grab bar, Piece (6mm Anchor bolts : 6 pieces+4mm bolts : 6 pieces)
Safe operating load	:100 kg
When attaching to a concrete wall, drill holes that are 45mm deep.(drill size: 6mm)	

## Grab bar

### AB3



660mm

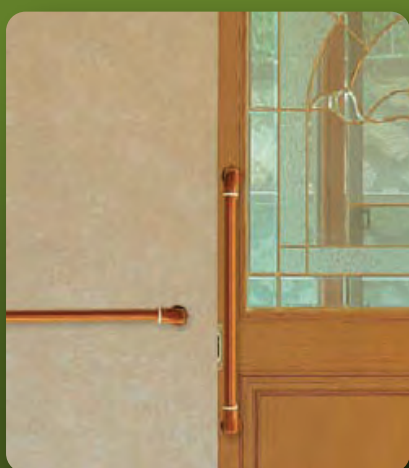
#### Apartment balcony type AB3

Code No	: F18030045012
Material	: Steel, ABS copolymer
Size	: $\phi$ 32 (Bar diameter)
Weight	: 730 g
Color	: green, yellow, white
Configuration	: Grab bar, Piece (6mm Anchor bolts : 6 pieces+4mm bolts : 6 pieces)
Safe operating load	:100 kg
When attaching to a concrete wall, drill holes that are 45mm deep.(drill size: 6mm)	

Q Grab bar



# Q Grab bar



Grab bar

**YGW200**



Door knob type **YGW200**

Material	: Aluminium, ABS copolymer
Size	: $\varnothing$ 32 (Bar diameter)
Weight	: 270 g
Color	: wood
Configuration	: Grab bar, Piece (6mm Anchor bolts : 6 pieces+4mm bolts : 6 pieces)
Safe operating load	: 90 kg

Grab bar

**YGW350**



Door knob type **YGW350**

Material	: Aluminium, ABS copolymer
Size	: $\varnothing$ 32 (Bar diameter)
Weight	: 310 g
Color	: wood
Configuration	: Grab bar, Piece (6mm Anchor bolts : 6 pieces+4mm bolts : 6 pieces)
Safe operating load	: 90 kg

Grab bar

**YGW500**



Hospital & Senior housing facilities type **YGW500**

Material	: Aluminium, ABS copolymer
Size	: $\varnothing$ 32 (Bar diameter)
Weight	: 370 g
Color	: wood
Configuration	: Grab bar, Piece (6mm Anchor bolts : 6 pieces+4mm bolts : 6 pieces)
Safe operating load	: 90 kg

Grab bar

**YGW650**



Hospital & Senior housing facilities type **YGW650**

Material	: Aluminium, ABS copolymer
Size	: $\varnothing$ 32 (Bar diameter)
Weight	: 440 g
Color	: wood
Configuration	: Grab bar, Piece (6mm Anchor bolts : 6 pieces+4mm bolts : 6 pieces)
Safe operating load	: 90 kg



# Q Portable Cool Insulin Case

## Product Description

The QPortable Cool Insulin Case is specifically designed for users who wish to carry their insulin supply during outdoor activities, short-term travelling and prefer not to store their supply in shared fridges at school, workplaces or public/communal areas.

## Key Features

Lightweight design, small and suitable for a handheld cooler.

At outdoor temperatures of up to 25 degrees Celsius, the cool case will keep insulin at 2-18 degrees Celsius for 18 hours.

Allows for private and safe storage of insulin.

Inner case is of lightweight design and is a convenient size for storing insulin and other medications.

Cooler bag itself is made of Styrofoam and protects contents from excessive heat.

Suitable for varied insulin products.



## Product Specification

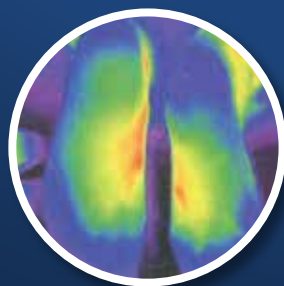
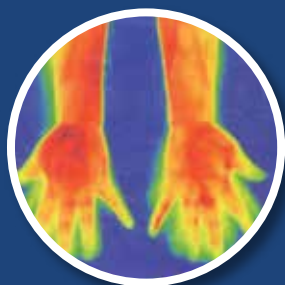
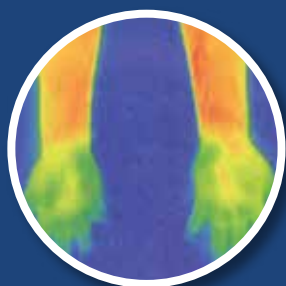
Inner Cool Case	223(L) x 97(W) x 62(H) mm, Weight: 150g
Styrofoam Package Bag	250 (L) x 112 (W) x 80(H) mm, Weight: 790g
Materials	Inner Case: PE Package Bag: Nylon EPP, Styrofoam Liquid Inside Cooler: PE Composite Material

# QHealth Bar

The QHealth Bar is perfect for busy office workers, light exercise during pregnancy and for the elderly who may experience weak or stiff joints.

As we age, healthy joints become more important than muscles. By simply holding the acupressure handles of the QHealth Bar and turning the bar in rotating movements, this improves blood circulation in wrist, elbow and shoulder joints.

Rolling the acupressure handle under the soles of the feet (on the ground) or over the palms, will stimulate these areas enabling similar effects to oriental acupressure.







## Q Scalp & Skin Massager

The QScalp and Skin Massager (2 pack) can be used on the scalp, face, hands, knees and on curved surfaces of the body to invigorate and loosen tired muscles and help relieve stress. The natural tourmaline beads emit negative ions and far infrared rays, aiding the detoxification process of the human body. Other health benefits include relieving stress, increased mental alertness, improving circulation and strengthening the immune system. Studies have shown tourmaline to have powerful toxin reducing abilities as well. The QScalp and Skin Massager is FDA-approved.



### Product Specification

Materials

Tourmaline, Polypropylene Plastic



## Q Shoe Insole

### Arch

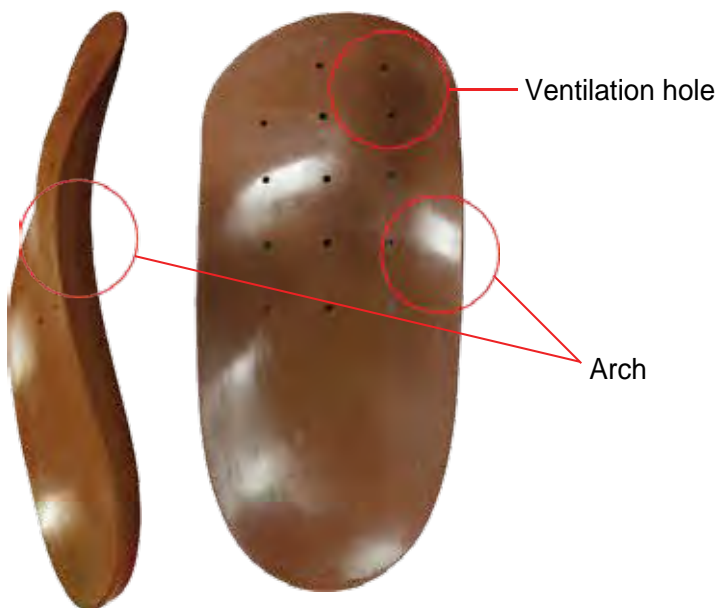
The QShoe Insoles help spread user's weight evenly and appropriately support the arch of the feet. The insoles help re-align feet to body for correct posture, and may help relieve related knee, hip and lower back pain, as well as fatigue incurred from prolonged standing or walking.

### Ventilation hole

The ventilation hole helps keep you feel refreshed.

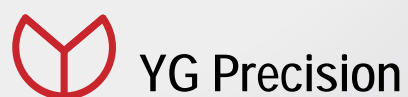
### Aromatic essence

The strawberry aromatic essence absorbed inside the product, helps reduce acidity and sweat inside shoes, as well as eliminating odours caused by bacteria.



### Product Specification

NO.	Length (L)	Width (W)	Weight
Small	64mm	150mm	100g
Medium	67mm	165mm	110g
Large	70mm	173mm	130g
X-Large	70mm	188mm	140g
Material	Polypropylene Plastic, Strawberry aromatic essence		



#### **Factory**

Address : 85, Gongdan Ro 3, Buk-gu, Daegu, KOREA 702-815

Phone : 82-53-357-5512-3 Fax : 82-53-353-5543

Website : [www.ukm.co.kr](http://www.ukm.co.kr)

#### **International Sales & Marketing Head office**

Address : Unit 7, 9-11 South St, Rydalmere NSW 2116 Australia

Phone : 61-2-9684-5009 Fax : 61-2-9684-6654

Website : [www.qmobility.com.au](http://www.qmobility.com.au)