

Warranty

This warranty is limited to Qmobility products purchased within the Commonwealth of Australia. Defects caused by improper care of the product or failure to observe any one or more of instructions will not be covered by Qmobility warranty. All warranty claim should be directed to Qmobility.

The Qmobility warranty shall be void for the following :

- Inability to provide proof of purchase or equivalent documentation
- Products not used in accordance to manufacturer's instructions
- Products used for incorrect applications
- Service, repairs or with non-standard replacement parts previously undertaken without written approval from Qmobility.

This product is warranted for 5 years from the date of purchase of the product.

Our goods come with guarantee that cannot be excluded under the Australian Consumer Law. You are entitled to a replacement or refund for a major failure and for compensation for any other reasonably foreseeable loss or damage. You are also entitled to have the goods repaired if the goods fail to be of acceptable quality and the failure does not amount to major failure.



Qmobility Customer Care Centre

1300 783 699



Percussive Massager User Manual



Ver 1.0

Please read this user manual carefully before use

Important

- ⚠ Warning: Do not use this appliance near water, or other vessels containing water. Unplug it after use since the proximity of water presents a risk, even when the appliance is switched off.
- ⚠ Before you connect the appliance, ensure that the voltage indicated on the appliance corresponds to the local power voltage.
- ⚠ When the appliance is connected to the power, never leave it unattended. Always unplug the appliance after use.
- ⚠ Do not use the appliance for any other purpose than described in this manual.
- ⚠ Never use any accessories or parts from other manufacturers and/or Qmobility does not specifically recommend. If you use such accessories or parts, your guarantee becomes invalid.
- ⚠ Do not wind the power cord round the appliance.
- ⚠ This appliance is not intended for use by persons (including children) with reduced physical, sensory or mental capabilities, or lack of experience and knowledge, unless they have been given supervision or instruction concerning use of the appliance by a person responsible for their safety. Children should be supervised to ensure they do not play with the appliance.
- ⚠ If the power cable is damaged, you must have it replaced by Qmobility, a service centre authorised by Qmobility or similarly qualified persons in order to avoid a hazard.
- ⚠ Unplug the power cable and stop using immediately in case of malfunction.
- ⚠ Do not use for more than 2~3 consecutive times in order to prevent overheating.
- ⚠ Do not disassemble or modify the appliance.
- ⚠ Unplug the power cable immediately in case of blackout.
- ⚠ The following people should avoid from using:
Patients with acute illness, perceptual disorder or pacemakers.
- ⚠ Avoid contact with magnetic strips (Bank cards/Credit cards).

Product Specification

Product Name: Doctor Q Percussive Massager

Model name: DBHD-501

Voltage: AC 240V/50Hz

Country of Manufacture: Republic of Korea

Troubleshooting tips

Problem	Solution
Massager stops during usage	Dr.Q Percussive Massager has a built-in timer that automatically stops after ten minutes of use. Lower the STRENGTH button to 0 and start again.
Massager does not move	Unplug the power cable, then try again after 2~3 minutes.
Massager overheats and stops	Dr.Q Percussive Massager prevents overheating by automatically shutting down the massager in case of long use. Start again after 30 minutes.

※ For further information and/or further enquiries, please visit the Qmobility website at www.qmobility.com or contact the Qmobility Customer Care Centre in your country. If there is no Customer Care Centre in your country, please visit your local Qmobility dealer

Dr. Q Percussive Massager Manual

A. Operating Dr. Q Percussive Massager

- 1 Plug in the power cable.



- 2 Mode
- 3 Strength

- 2 Choose the type of tapping motion using the MODE button (M1: Slow mode, M2: Fast mode, M3: Rotation of Slow mode and Fast mode, Mix: Alternating speeds).
- 3 Choose intensity using the STRENGTH button (Lowest 1 & Highest 3).
- 4 You can always change the mode and intensity during usage. Dr. Q Percussive Massager will automatically stop after ten minutes of continuous use.
- 5 Use the extension handle for areas that are hard to reach such as back, shoulder and waist.

B. Connecting the extension handle

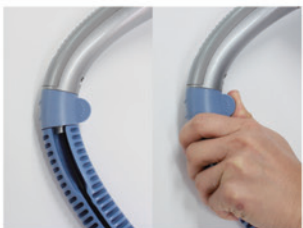


- 1 Place the massager unit onto the extension handle as shown above.



- 2 Push the connection part of the body into the extension handle with two hands.

D. Disconnecting the extension handle



- 1 Hold the lock as above

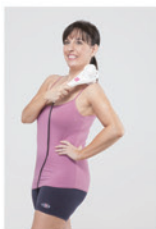


- 2 Open the lock in the direction of the arrow as shown above



- 3 Gently pull apart the body from the extension handle
- ※ Initial use of the extension handle lock may feel stiff. Apply gentle pressure to pry open.

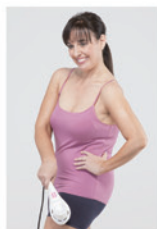
E. Using Dr. Q Percussive Massager without the extension handle



Shoulder



Abdomen



Thigh



Foot



- 3 Close the lock until it makes a clicking sound.



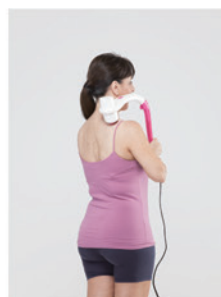
- 4 Insert the power cable into the groove of the extension handle.



- 5 Connection Completed.

※ Use the extension handle for the areas that are hard to reach such as back, shoulder and waist

C. Using Dr. Q Percussive Massager with the extension handle



Shoulder



Upper Back



Lower back and waist area

Dr. Q Percussive Massager Layout



- 1 Main Unit
- 2 Power and Mode switch
- 3 Power cable
- 4 Non-slip grip
- 5 Extension handle Connection
- 6 Extension handle